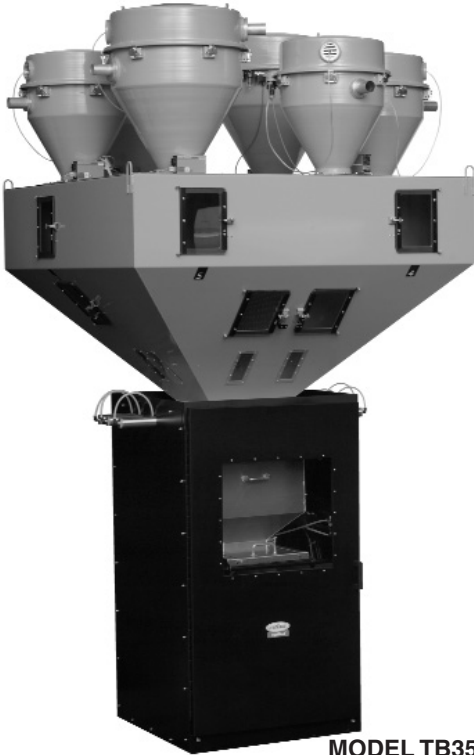


TRUEBLEND™ TB3500-4, TB3500-5 AND TB3500-6



MODEL TB3500-6
Shown with (2) DL25 and
(4) DL20 receivers.

ACCURATE GRAVIMETRIC BLENDING FOR HIGHER THROUGHPUTS

Get accurate blends, better mixing, faster material changes and increased profits with Conair's TrueBlend series blenders.

Steep-sided component hoppers allow material to flow evenly and freely through dispense valves into the weigh chamber. Efficient mixing assures full integration of all recipe ingredients. The fully enclosed cabinet design assures no pellet spillage and clean operation. Standard convenient features such as two access doors on each material compartment and a hinged access door to the mixing chamber reduce downtime during cleanout.

THROUGHPUT RATES TO 12000 POUNDS AN HOUR

The TrueBlend TB3500 series blenders offer processors with large extruders or central blending applications a superior way to blend naturals, regrinds and additives centrally or at the throat of the processing machine.

The blender dispenses up to six materials (depending on model) from respective material compartments into a common weigh chamber. The control determines the correct weight of each ingredient based on set points entered on the touch screen display. Up to 50 recipes can be entered and stored in the control.

Air solenoids and major electrical components are easily accessed through the electrically interlocked main power box.

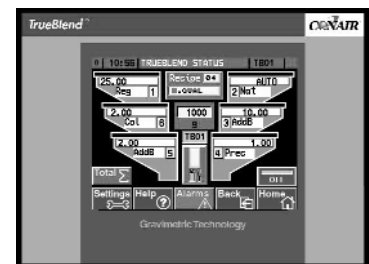
Choose between four, five or six component blender models. Options include an integrated blender/loader control feature, addition of a flow control valve for central blending applications, material compartment drainports and ethernet communications.

■ Blend accuracy to 1/2 of 1%

Colorant and/or additive weights are held to within 0.5% of setting. A selectable Precision Additive™ feature is also available for additives. The microprocessor control automatically calibrates after every cycle and compensates for variations in dispense method, resin bulk density or particle geometry.

■ Easy to use control

New, intuitive 5.7 inch LCD touch screen control with full color graphics allows quick and easy setup of blender setpoints. All setpoints are displayed simultaneously. Enter the percentages of the blend on the touch screen display and the blender does the rest. Three password levels (user, supervisor and service) give you the ability to control access to sensitive settings.



■ Convenient, no-tools clean out

Easy access to all material contact points for fast and safe cleaning during color or resin changes. Material compartment access doors, removable weigh bin, and self-draining mix chamber access allow quick, efficient cleaning. The blender features a built-in material shutoff valve below the mixing chamber, this can be replaced with an automatic flow control valve for remote and central blending applications.

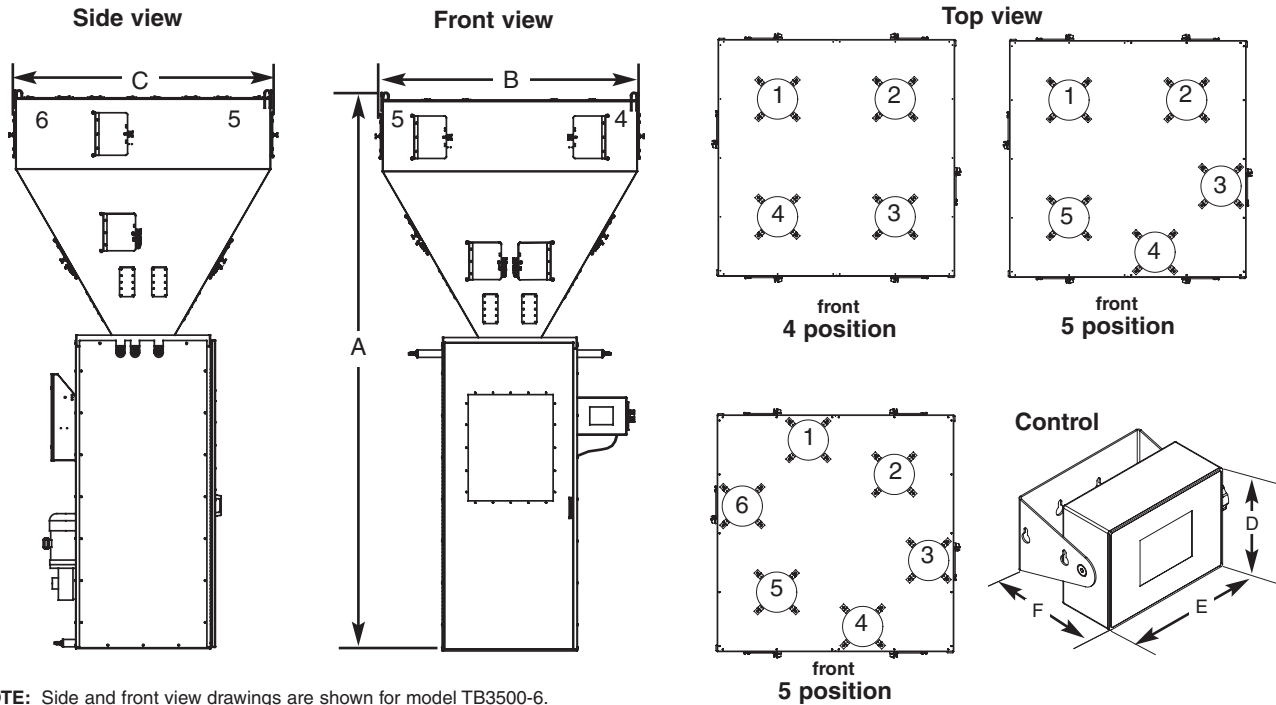
NEW Ask about our TrueBlend
Reporting Software!

CONAIR™

SPECIFICATIONS

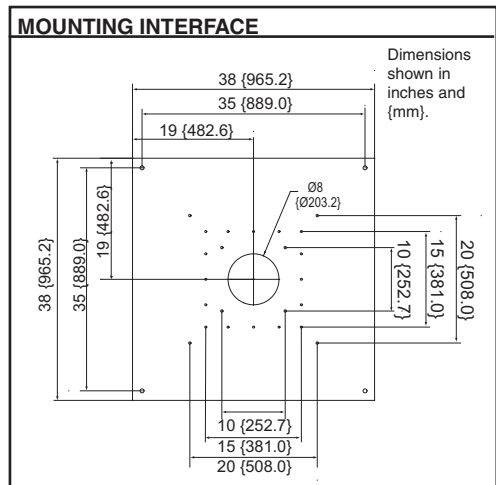
GRAVIMETRIC BATCH BLENDERS

TRUEBLEND™ TB3500-4, TB3500-5 AND TB3500-6



NOTE: Side and front view drawings are shown for model TB3500-6. The bin positions change for a TB3500-4 and TB3500-5 models, see the top view.

MODELS	TB3500-4	TB3500-5	TB3500-6
Performance characteristics			
Batch size lbs {g}	77 {35000}	77 {35000}	77 {35000}
Maximum throughput lbs/hr {kg/hr}*	12000 {5443}	11000 {4990}	10000 {4536}
Bin capacity - main ingredient ft ³ {liter}	18 {510}	18 {510}	18 {510}
Bin capacity - minor ingredient ft ³ {liter}	18 {510}	9 {255}	9 {255}
Maximum number of materials	4	5	6
Number of major valves	4 (6X6)	3 (6X6)	2 (6X6)
Number of minor valves	0	2 (2X6)	4 (2X6)
Dimensions inches {mm}			
A - Height above mounting plate	156 {3962}	156 {3962}	156 {3962}
B - Width	72 {1828}	72 {1828}	72 {1828}
C - Depth	72 {1828}	72 {1828}	72 {1828}
D - Controller height	8.25 {209.6}	8.25 {209.6}	8.25 {209.6}
E - Controller width	9.25 {235.0}	9.25 {235.0}	9.25 {235.0}
F - Controller depth	4.75 {120.6}	4.75 {120.6}	4.75 {120.6}
Weight lbs {kg}			
Installed	2982 {1353}	3049 {1383}	3115 {1413}
Shipping	3282 {1489}	3349 {1519}	3415 {1549}
Voltage total amps			
240V/3 phase/60 hz	10.3	10.3	10.3
400V/3 phase/50 hz	7.7	7.7	7.7
480V/3 phase/60 hz	6.4	6.4	6.4
575V/3 phase/60 hz	5.6	5.6	5.6
Compressed air requirements			
	0.3 ft ³ /min @ 90 psi {6 bars @ 0.14 liters/sec}		
	3/8 in. NPT fitting		
Maximum loader sizes			
Number of 25 inch loaders	4	5	6



SPECIFICATION NOTES

* Maximum throughput rates are based on 35 lb/ft³ pelletized material and using all standard valve sizes. Use of reducer inserts will lower the rate shown.

The optional flow control valve will mount inside the chassis in the space of the manual slide valve. Conair recommends using the optional flow control valve when mounting the blender on a stand, surge bin or hopper.

Specifications may change without notice, consult with a Conair representative for the most current information.

