

Process Control & Data Management Systems



Beta LaserMike's DataPro controller series, when coupled with dimensional measurement instrumentation and a versatile set of I/O capabilities, enables you to produce superior quality tube by providing all the information and control capability you need to keep your production process running smoothly. DataPro systems aid and improve the tube manufacturing process at every step, from start-up to production to the final quality checks.

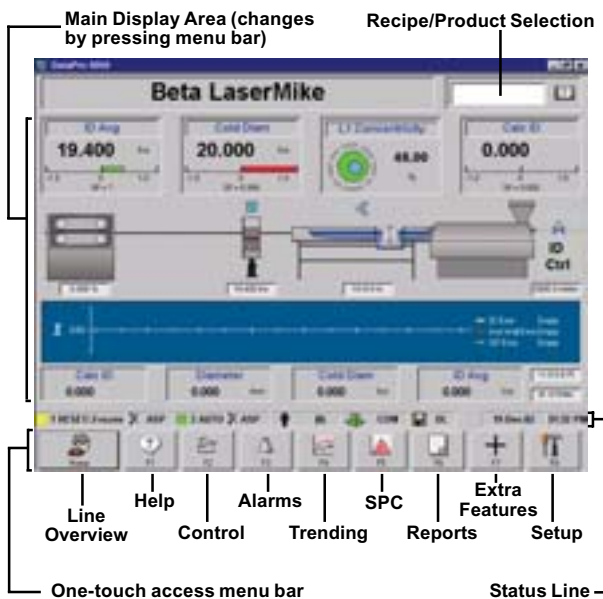


DataPro Controller Models			
Feature	DataPro 1000	DataPro 3000	DataPro 5000
Display	Vacuum fluorescent	Vacuum fluorescent	12.1" or 15" TFT touch screen
Gauge support	AccuScan LaserSpeed	UltraScan GraviScan AccuScan LaserSpeed	UltraScan Holix AccuScan LaserSpeed LN Detector
Max gauges	1	2	Not limited
Cross-section display	No	Yes (1 layer only)	Yes (multi-layer possible)
Control loops	1	1	2
Auto setpoint control	No	No	Yes
SPC	1 channel	2 channels	12" 4 channels 15" 8 channels
Trend charts	No	No	12" 4 channels 15" 5 channels
Printed reports	Yes (fixed)	Yes (fixed)	Yes (custom)
Data logging	No	No	12" 10 channels 15" 20 channels
Serial ports	RS-232	RS-232	RS-232 & USB
Ethernet port	Configuration Only	No	Yes (10/100 Base T)
Alarming	Yes	Yes	Yes
Product recipes	No	Yes (100)	Yes (not limited)
Security	No	4 levels	10 levels
Remote display output	No	No	VGA with optional touchscreen
I/O	Digital, analog & serial	Digital, analog, relay contacts, serial & parallel	Digital, analog, relay contacts, serial, parallel, Ethernet & VGA

DataPro 5000

The DataPro 5000 is a high-end, fully featured process controller and data management system. Its easy-to-use, touch-screen interface provides the user with a color graphical view of product dimensions and process parameters in a variety of formats. DataPro 5000 is designed with various users in mind: operators, supervisors, process engineers, and plant managers. The user interface is designed to be simple enough for any operator to use, while also being very flexible in its configuration and allowing easy accessibility to data.

Easy-To-Use Touch Screen Interface



Features

- 12.1" or 15" color touch-screen display
- Line overview page
- Die centering cross section display (multi-layer possible)
- Closed-loop control (2 control loops, auto setpointing)
- Alarming (alarm history log)
- Trending (configurable trend charts)
- SPC (on-screen statistics and charts)
- Reporting (customizable printed or electronic reports)
- Data logging (configurable local or network data logging)
- Recipes (unlimited product recipes for quick changeovers)
- Security (10 levels of security for system protection)
- Networking (Ethernet and USB ports allow easy data access)
- Instant support for 14 languages; user-customizable

Options

- Industrial enclosure – arm or pedestal mountable
- Industrial remote touch-screen – includes VGA extender and industrial enclosure
- Standard remote touch-screen – includes VGA extender, but does not include enclosure
- Pedestal stand for enclosures – controller industrial enclosure or remote touch-screen
- Uninterruptable Power Supply (UPS) – with serial output to shut down controller at power loss
- 19" rack adapter – only needed for 12.1" version of DataPro 5000
- Material usage software

Expandable I/O

- Digital I/O
- Analog I/O
- Relay contact alarm outputs
- Relay contact control outputs
- Analog summing junction control outputs
- Ethernet 10/100 Base T
- Serial (RS-232 and USB)
- Parallel
- VGA output
- Length counter

All controller configurations are available with DataPro 5000.

DataPro 3000

The DataPro 3000 is a mid-range featured process controller and data management system. Its vacuum fluorescent display is bright and is easily viewed along the extrusion line. It is designed to provide the operator with simple numeric product information, as well as a graphical display of the tube cross-section for concentricity (when used with UltraScan gauges). DataPro 3000 provides the user with simple, yet powerful, operation in a compact package.

Features

- Ultra-bright, multi-line display
- Supports 2 gauges
- Die centering cross section display (1-layer only)
- Magnified display for longer viewing range
- Closed-loop control (1 control loop)
- Alarming (tolerance alarm outputs)
- SPC (on-screen statistics)
- Reporting (fixed hard-copy reports)
- Recipes (100 product recipes for quick changeovers)
- Security (4 levels of security for system protection)
- Instant support of multiple languages

Options

- 19" rack adapter plate



I/O

- Digital I/O
- Analog I/O
- Relay contact alarm outputs
- Relay contact control outputs
- Analog summing junction control output
- Open collector stepper motor control outputs
- Serial (RS-232)
- Parallel
- Length counter

The controller configurations available with DataPro 3000 include: -01, -03, -11, -20, -22.

DataPro 1000

The DataPro 1000 is an economical process controller and indicator. Its VFD display shows numeric diameter and ovality data to the operator on-line. It is limited in the amount of data it provides, but when in-process measurements, tolerance checking, and simple process control are critical, the DataPro 1000 provides a very cost-effective package.

Features

- Ultra-bright, multi-line display
- Simple user interface
- Supports 1 gauge
- Closed-loop control (1 control loop)
- Alarming (tolerance alarm outputs)
- SPC (on-screen statistics)
- Instant support of multiple languages

Options

- 19" rack adapter plate



I/O

- Digital I/O
- Analog I/O
- Analog summing junction control output
- Open collector stepper motor control outputs
- Serial (RS-232)
- Length counter

The only controller configuration available with DataPro 1000 is -01.